

DULWICH

HAMLET

FOOTBALL CLUB

£3

Official
Programme



ASHFORD TOWN FC

2pm Sunday 1st September 2024

WOMEN'S
NATIONAL
LEAGUE SE

Virtus

DEFECTED

RISINGEDGE

 octopusenergy

Respect 

 go UP

SUPPORTING ALBRIGHTON FOOD BANK



DULWICH HAMLET FOOTBALL CLUB

PRESIDENT	Jack Payne
VICE PRESIDENTS	John Lawrence, Bill Azzi, Martin Eede and John Leahy
CHAIRMAN	Ben Clasper
DIRECTORS	Dumebi Dumaka, Mel Hughes, Mark Scoltock, Mark Weatherald, Brittany Saylor & Nick Igoe
CLUB SECRETARY	Joe Hickey
COMPANY SECRETARY	Liam Hickey
WOMEN'S SECRETARY	Jatin Guntupalli
TEAM MANAGER	Ryan Dempsey
ASSISTANT MANAGER	Jamie Broughton
GOALKEEPING COACH	Mark Overall
PHYSIO	Alex Muciek
ANALYTICS	Hernan Rivero
COACH	James Morse
GENERAL MANAGER	Mel Hughes
MEDIA AND COMMS	Kian Ward
COMMUNITY	Rob Hyneman
COMMERCIAL	Clare Keeble
PROGRAMME EDITOR	David Rogers

Champion Hill Stadium
Edgar Kail Way
East Dulwich
London, SE22 8BD

DAVID ROGERS

PROGRAMME EDITOR

Good afternoon everyone and a warm welcome to the players, staff and supporters from Ashford Town FC.

Last time I wrote for the programme we were nervously waiting for the first game of the season in our new division and we more than held our own that afternoon despite losing 3-2.

The atmosphere in the stadium was electric and that was helped by the 814 strong crowd including the Norwich supporters who turned up to cheer on their team. So well done all. Here is hoping the return fixture will be at Carrow Road!

Last Sunday a decent sized crowd made their way to London Seaward where a Natalie Taylor 65th minute goal earned us all three points.

Let's see what happens today!

Enjoy your afternoon!

DULWICH HAMLET FOOTBALL CLUB LIMITED OWNERSHIP

Company Name: Dulwich Hamlet Football Club Limited | **Company Type:** Private Limited Company – Limited by Shares | Registered in England and Wales Number 02840930 | Registered Office: Champion Hill Stadium, Edgar Kail Way, East Dulwich, London, SE22 8BD | **Directors** – Benjamin Clasper, Dumebi Dumaka, Mark Weatherald, Melanie Hughes, Mark Scoltock, Nick Igoe, Brittany Saylor | **Company Secretary:** Liam Hickey | **Persons with Significant Interest/Control** - Benjamin Clasper, Dulwich Hamlet Football Community Mutual Limited – trading as Dulwich Hamlet Supporters' Trust **Ground:** Champion Hill Stadium, Edgar Kail Way, East Dulwich, London, SE22 8BD **Telephone:** 020 7501 9255

BRIT SAYLOR

DIRECTOR'S NOTES



Looking back on our league-winning season brings immense pride and joy - I'm genuinely still smiling about it!

Before we kick-off the official league season, I thought it might be worthwhile sharing some key reflections that I think led to our success: Unity and Focus: Our success was built on a narrative of unity. Every player bought into the team and club and what we were trying to achieve. We remained laser-focused on what was in front of us each day and each player, individually, positively contributed to the group to achieve our goals. To everyone involved, your dedication and tenacity was what helped us win the league.

Our Pepper Army & Supporters: To our fans, the heartbeat of our club, your amazing support was what pushed us beyond what we thought was possible. Your faith in us never wavered, and it is with deep gratitude that I say—we couldn't have done it without you.

Culture: The culture we've cultivated at the club, one that binds us all—players, staff, and supporters—has been what has helped us

embrace and overcome challenges. I firmly believe that without a strong culture to fall back on, teams and clubs will struggle to have sustained success. There will be days when your passes don't connect and your shots don't drop and we all need a collective belief and culture that will get us through the tough times. Last season, we had this and I hope that we can carry it forward.

I wanted to take the opportunity to share these reflections because while I've decided to retire from playing, I don't want these lessons to be lost.

Looking forward, while I won't be present on the pitch anymore, I have recently been appointed as a Director of the Club. As a Director, I will be responsible for creating and executing our vision, strategy, and values and I hope that I can further embed and carry out our learnings from last season to positively impact the club.

I have no doubt that this season, for both teams, will be a challenging but rewarding one and I am very excited for the year ahead!

IPW1

PROPER PRINTING.

**PROUD SUPPORTERS OF THE
DULWICH HAMLET
FOOTBALL CLUB**

PRINT

GOALS



**BESPOKE BOXES & PACKAGING
MENUS & TABLEWARE
LABELS & STICKERS
WINDOW DISPLAYS & CUT VINYL PRINTING
DIGITAL PRINTING
DIGITAL WITH METALLIC
LITHO & THERMOGRAPHIC PRINTING
FOIL PRINTING, EMBOSING & DIE CUTTING
FULL STATIONERY & PRINT FINISHING
MOUNTING & ENCAPSULATION
LARGE FORMAT, POSTERS & ROLLER BANNERS**

**WE'VE
GOT THIS!**

020 7437 3200

HELLO@IPW1.CO.UK

IPW1.CO.UK



IPW1 - PROPER PRINTING

DISCOVER SCENIC TRAILS >>>



The Great Hospital Hike



14 September 2024

10:00am



Ruskin Park, London, SE24 0AA

18 miles



supportkings.org.uk/hike

#TeamKings



IF YOU SEE, HEAR OR RECEIVE DISCRIMINATION OF ANY KIND REPORT IT!

COMMUNITY@DULWICHAMLETFC.CO.UK

#TOGETHERWECANCHANGEIT



DOWNLOAD OUR FREE REPORTING APP



FACEBOOK / KICK.IT.OUT.OFFICIAL



@KICKITOUT
@KICKITOUTREPORT



@KICK.IT.OUT



REPORT@KICK.IT.OUT.ORG



0800 169 9414



Virtus
Partners in construction

London's First Choice Principal Contractor

For over 24 years we have been London's go to fit out contractor. Our aim is to provide clients with absolute certainty in the supply of high quality interior fit-out and refurbishment projects.

Virtus

Scan Me!



Office Fit Out

Refurbishment

Small Works

Specialist
Projects

Retail

Residential



Tailored workplace solutions



Enhancing the existing and refreshing the everyday



Small but mighty



Unique spaces, simplified



Eye-catching interiors



High-end homes built to last



CLUB NEWS



EMAIL NEWSLETTER

We have recently relaunched our weekly newsletter which now brings you all the latest news from the club and details of tickets for both our Men's and Women's team.

We will not sell on your information to any third party and you can opt out at any time.

You might still be receiving newsletters from our old Pitchero website which you can now unsubscribe from by clicking the link at the bottom of the email.

This website is no longer updated but still sends emails out which we have no control

over.

The link to sign up to our new newsletter is dulwichhamletfc.co.uk/newsletter.

BAR/VENUE HIRE

As some of you may already know, we are having the top floor of the main club house refurbished as part of a sponsorship deal with Virtus Construction.

Whilst we have not got a finishing date set yet, we should have an announcement soon.

It will be a huge asset to the club and will be one of the biggest venues for hire in the area.

To register an interest in hiring the venue, please email:

bar@dulwichhamletfc.co.uk

In the meantime our regular club bar is available for hire so please email Jake on the above email address if you are interested.

SPONSORSHIP

We still have a number of games this season which we are looking for sponsors for both the match day and match balls.

We also have a number of players in both the Men's and Women's teams that are looking for sponsors.

To find out more please visit our website or email Clare:

commercial@dulwichhamletfc.co.uk

MATCHDAY MASCOTS WANTED!

Do you know someone who would like to walk out with the teams at Champion Hill?

The new season is upon us and we are delighted to relaunch our mascot scheme for the forthcoming season.

We are always looking for individuals or groups of children to walk out with the teams at Champion Hill.

We believe that you cannot put a price on children having the opportunity to experience live football and be part of their community club – so we haven't!

Therefore, being a mascot at Dulwich Hamlet FC is absolutely FREE!

To find out more information please email Rob:

community@dulwichhamletfc.co.uk

RESERVES TEAM NEWS

Helen Bellfield's reserve team are two games into their London and South East Regional Women's League Division One North season after putting two wins on the table signalling their intent for the season.

The season kicked off with a 4-2 home win against Richmond Park with two goals each from Shakirra Sesay and Emily Auld.

Next up Dulwich served up a 2-1 home win against Clapton Community club with two goals from Natalia Davila, who we are told is a player to watch!

Coming soon, the reserves take on Whyteleafe at Church Road on Sunday 8th September (15:30 ko) then have a big home game against Brentford on Sunday 15th September (14:00 ko)

DULWICH HAMLET FC

FORMED	2019
STADIUM	Champion Hill
CAPACITY	3,334
MANAGER	Ryan Dempsey
NICKNAMES	The Pepper Army



2024-25 will mark the sixth season for Dulwich Hamlet Women, since the players and staff of AFC Phoenix merged with the Hamlet in the summer of 2019.

Phoenix had worked its way through the ranks of the football pyramid to the London & South East Regional Women's League (Tier 5) after a title-winning 16-17 season.

After two consecutive second-place finishes and a cup final win, the decision was made to seek out the support the women playing for the club deserved, and merge with an existing men's club that matched their ethos and ambition. After playing their final league game of the 18-19 season at Champion Hill, narrowly losing to Kent Football United and missing out on promotion, the two clubs would link up and our women's side was born.

Heartbreak would hit the side in their first season, as manager Farouk Menia lost his battle with a long illness and passed away, with current manager Ryan Dempsey taking over and continuing Farouk's excellent work,

guiding the side to two top place finishes, only for the pandemic to intervene, and QPR were chosen by the league for promotion instead of the Hamlet in 2021, despite us having a greater points-per-game record across the two seasons.

After the near-miss of promotion to the National League, optimism was high ahead of 2021-22, but it would be a disappointing one for the side, as inconsistency saw them end the campaign in fifth.

However, a first cup final as the Hamlet was reached, losing 2-0 to Ashford Town in the Capital Senior Cup at Meadowbank in Dorking.

2022-23 brought with it the continued rise of the Pepper Army, our faithful group of supporters, with league attendances averaging 350.

The side would go on a club-equalling eight game unbeaten run during the spring, ending the season in fourth, and playing a match at the New Den on the final day of the season.



The highlight was undoubtedly the FA Cup run, with the side reaching the proper stages of the competition for the first time, with Aylesford then beat in Round One to set up a tie with Tier 3 Gillingham at home in Round Two.

In front of a record 631 fans, the Hamlet could not force an upset, losing 2-1.

The 2023/24 season was undoubtedly the most successful season yet.

The team reached the second round of the FA Cup for the second season in a row losing to Billericay Town 2-1.

They would go on to win the league and get themselves promoted to the Women's National League South East on the last day of the season beating Saltdean United FC 5-1 at Newhaven FC.

This season saw Captain Brit Saylor retire from football and join the club's board of directors.

The last home game she played was a 3-0 win against Enfield FC when the club smashed the attendance figure with 1,142 coming through the gates.

The season saw average attendances rise to 450.

The club has also run a Reserves side throughout their time as the Hamlet. Beginning in Division 1 of the Greater London Women's Football League in 2019, the side would earn promotion to the Premier Division at the end of that season, and despite the pandemic, would be chosen for successive promotions at the end of the 2020-21 campaign.

This meant they would join the London & South East Regional Women's League, competing one division below the First Team in Division One North, and would enjoy a very successful first season at the level, eventually finishing third behind Sutton United and Dorking Wanderers.

ASHFORD TOWN FC

FORMED 2015
STADIUM Robert Parker Stadium
CAPACITY 2,550
MANAGER Adam Frailing
NICKNAME: Tangerines



A team many of us will be familiar with as they shared the London and South East regional Women's League with us until their promotion in the 2021/22 season. The women's section (started in 2015) was run in affiliation with the club.

During that time the First Team has been promoted 5 times. At the start of the 2023/24 season the women's section was merged fully with Ashford Town (Middlesex) FC.

Last season they finished 4th in the League. Our last encounter with them was in May 2022 in the Capital Cup final where Ashford won 2-0 at Dorking's Meadowbank Stadium.

The team play at the Robert Parker Stadium in Stanwell which has a capacity of 2,250, a grass pitch and clubhouse facilities. Their average attendance was 56 in the 2022/23 season.

HEAD TO HEAD

03.05.22 Meadowbank (CC Final) (L) 2-0
27.03.22 Robert Parker Stadium (L) 3-1
17.10.21 Champion Hill (D) 1-1

RECENT RESULTS

26.08.24 Westfield (A) (L) 3-1
24.08.24 Hartley Wintney (H) (L) 2-1
10.08.24 Southall (A) (D) 1-1

RECENT LEAGUE FORM

DULWICH HAMLET FC



ASHFORD TOWN FC





Trusted By Over 1,600 London Homeowners

buildteam[®]
Extension Specialists



Scan To Book A
FREE
Home Visit

- ✓ Feasibility Assessment
- ✓ Construction Advice
- ✓ Planning Considerations
- ✓ Detailed Build Quote



Proud Sponsors:



PROUD SUPPORTERS OF DULWICH HAMLET FC FOR OVER 20 YEARS

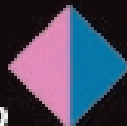


The advantage of great partnerships



D&O Insurance
Reimagined

risingedge.co



HARVEY & WHEELER

ESTABLISHED 1855



Proud supporter of DHFC

MAKE YOUR MOVE IN ANY SEASON



**Scan the QR Code to arrange
a free valuation to sell or let
and find your new home**

Harvey & Wheeler is your independent, family run estate agency serving Dulwich and the surrounding area.

**020 8693 4321 • harveywheeler.com • @ in
33 Dulwich Village, SE21 7BN**



SQUAD



SASKIA REEVES PRIESTLEY

SPONSORED BY
O'HARA NEWMANS



JODIE LODGE

SPONSORED BY
GAVIN SMITH
ASLEF WATERLOO AND NINE ELMS BRANCH



ASIA HARBOUR BROWN (C)

SPONSORED BY
THIEF ON THE ROUNDABOUT
COME & GO SOUVLAKI



RHEA GALL

SPONSORED BY
THE CHAPMAN FAMILY



MORGAN SEARLE

SPONSORED BY
RITA BIRD - MORGAN'S NAN



ANNA JOWLE

SPONSORED BY
SEAT UNIQUE



TIA SEARLE

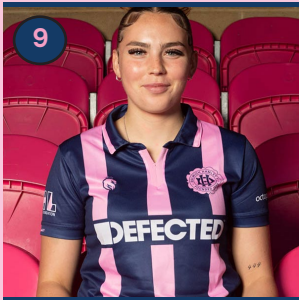
SPONSORED BY
RITA BIRD - TIA'S NAN



ELEANOR HUTCHINGS

SPONSORED BY
AVAILABLE TO SPONSOR

TO SPONSOR A PLAYER CONTACT CLAREKEEBLE@DULWICHHAMLETFC.CO.UK

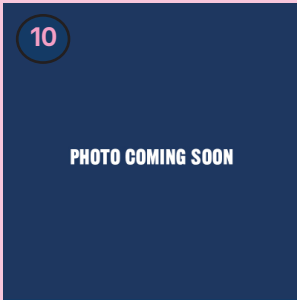


9

SUMMER ROBERTS

SPONSORED BY

IMPETUS WOMEN'S FOOTBALL
LILY LETHBRIDGE



10

PHOTO COMING SOON

NATALIE TAYLOR

SPONSORED BY

AVAILABLE TO SPONSOR



11

MARTHA GODDARD

SPONSORED BY

GIRLS UNITED



12

ERIN CORRIGAN

SPONSORED BY

THE CHAMPION HILLBILLIES
LAWRENCE COOK



13

GEYLON HICKMAN

SPONSORED BY

THE PEPPER ARMY



14

LUCY MONKMAN

SPONSORED BY

PAUL AUSTIN
VIRTUS - PARTNERS IN CONSTRUCTION

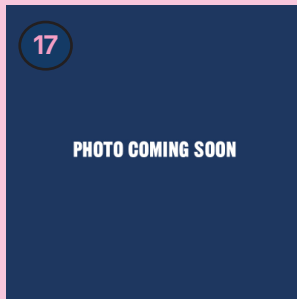


15

NATASHA STEPHENS

SPONSORED BY

AVAILABLE TO SPONSOR



17

PHOTO COMING SOON

PHOEBE LEITCH

SPONSORED BY

AVAILABLE TO SPONSOR



19

EDE BUCHELE

SPONSORED BY

AVAILABLE TO SPONSOR

SUPPORTING ALBRIGHTON FOOD BANK



20

MINNIE CRUTTWELL

SPONSORED BY
THE CORRIGAN FAMILY



21

LILY PRICE

SPONSORED BY
DISTANT RELATIVE
COME & GO SOUVLAKI



22

IRIS LACEY

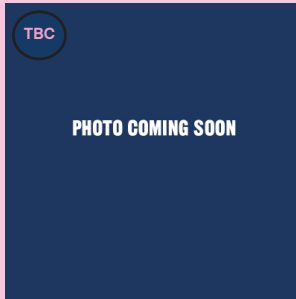
SPONSORED BY
AVAILABLE TO SPONSOR



23

GWYN WEST

SPONSORED BY
AVAILABLE TO SPONSOR

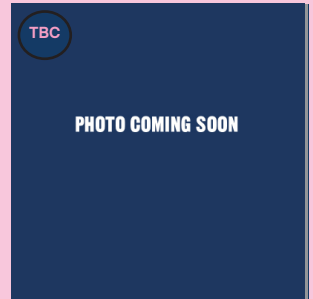


TBC

PHOTO COMING SOON

OLGA OCRAN

SPONSORED BY
AVAILABLE TO SPONSOR



TBC

PHOTO COMING SOON

ANGIE DUNBAR-BONNIE

SPONSORED BY
TOM & HELGA FROM NORWAY

DEFECTED™

SUPPORTING ALBRIGHTON FOOD BANK

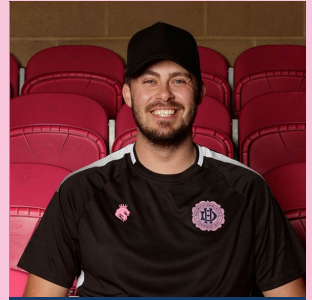


MANAGEMENT



RYAN DEMPSEY

MANAGER
SPONSORED BY
DULWICH HAMLET SUPPORTERS' TRUST



JAMIE BROUGHTON

ASSISTANT MANAGER
SPONSORED BY
AWAY DAY SLEEPERS



JAMES MORSE

COACH
SPONSORED BY
AVAILABLE TO SPONSOR



LEE WEBB

COACH
SPONSORED BY
DULWICH HAMLET COMEDY CLUB
FIRST THURSDAY OF THE MONTH



MARK OVERALL

GOALKEEPING COACH
SPONSORED BY
AVAILABLE TO SPONSOR

AWAITING PHOTO

ALEX MUCIEK

PHYSIO
SPONSORED BY
AVAILABLE TO SPONSOR



Virtus
Partners in construction

TO SPONSOR A PLAYER CONTACT CLAREKEEBLE@DULWICHHAMLETFC.CO.UK

DULWICH HAMLET AT PRIDE

KIAN WARD



Well, where do we begin? In June this year we put ourselves on an international stage, we were privileged to be invited to participate in the Pride in London march in front of an in-person audience of over million!

Pride to me at least means many things today. Firstly, it's a celebration. A celebration of love of hope and a celebration of how far the LGBTQ+ community has come.

Secondly, it's a chance to remember. To remember those who are no longer

with us and the impact they had on our society. From people like Alan Turing to Justin Fashanu, those people have and will continue to have an impact on the community around us.

Finally, and most importantly, and what I think Pride events miss now more than ever, is that it is still and always will be a protest. A protest for equal rights for LGBTQ+ people here in the UK and around the world.

We first thought of doing Pride in London over 12 months ago, when I

attended the event in 2023. It was just that, an idea!

I didn't think anything would come of it. However, thanks to the hard work of various club staff, the support of the Supporters' Trust and the likes of Octopus Energy, JBL and GoAhead London. We were able to continue to show our support to those in the LGBTQ+ community.

Over 80 people marched through the centre of London with placards calling out Transphobia a fight that this football club continues to have on a daily basis.

We had unique Dulwich shirts with a big rainbow going down the middle. When this football club does something, it does it properly. We aren't scared of what others think or what the world will say about us. We do it because it is right.

Pride in London allowed us to go alongside some of the biggest football clubs in the world and stand in unison for equal rights for LGBTQ+ people. We stood shoulder to shoulder with the likes of Arsenal, Chelsea and the former Champions of Europe West Ham. We marched with TRUK United and a bus full of drag queens, well we tried to until a small club from north London called Tottenham cut in with a little minivan!

Our football club gets it. Doesn't it? We've created a space for people from all walks of life to stand and enjoy the sport they love.

Football isn't the most inclusive place, but in our small pink & blue corner of London we've made a stand against the norms and created an environment where people can thrive.

On the evening after Pride, I sat on my friend's balcony facing the famous



**“YOU
CAN’T WIN
WITHOUT
GAYS”**



Wembley arch and it was there that it hit me, little old Dulwich Hamlet, the club that dares to dream, that dares to be different, that dares to stand out had done it. We protested and we did it in pink & blue.

The fight for LGBTQ+ people isn't over, and we'll do everything possible to support the community especially our trans brothers and sisters.

It doesn't matter who you are or where you come from, Love is Love and that's all that matters.

Anyway, onto Pride in London 2025!

Keep being you

Kian (He/Him)

With special thanks to Go Ahead (Camberwell Bus Garage), Octopus Energy, The Berry Juice Company, JBL, DHST and all the people that donated their time to make the PRIDE in London event happen.

- **Go Ahead (Camberwell Bus Garage) – donated an open top bus and two drivers**
- **Octopus Energy – gave us a donation**
- **The Berry Juice Company – donated water**
- **JBL/Harman – donated two speakers**
- **Hope & Glory -designed the shirts**
- **DHST – gave us a donation**
- **Paul Hamilton – designed the banners and scarves**
- **Several people donated time to make the event happen**







NO TERFS
ON
OUR TURF

ALL OF US
OR NONE
OF US



THE PRIDE
OF DEFECTED

"YOU
CAN'T WIN
WITHOUT
GAYS"

#WEAREEVERYWHERE
DULWICH
HAMLET
FOOTBALL
CLUB
PRIDE
IN LONDON

QUEER
EXISTENCE
IS
RESISTANCE

DEFECTED

DEFECTED

DEFECTED

DEFECTED

PRIDE
IN LONDON
HEEY STEWARD



THE PRIDE OF SOUTH LONDON

DHFC PRIDE 2024
Twitch Hamlet THE LONDON 2024

WE DON'T CARE WHAT SIDE YOU PLAY FOR

DULWICH HAMLET

DHFC

DEFECTED

DEFECTED

DEFECTED

DEFECTED

DEFECTED

20 QUESTIONS

ERIN CORRIGAN

Your favourite music artist/band - Zach brown band and Monki

Song you know word for word - Love the way you lie Eminem & rhianna

Go to karaoke song - What's Up by the 4 non blondes hehe

Favourite TV show or Film - Game of Thrones seasons 1-7

The last book you have read - Daisy Jones & the Six by Taylor Jenkins Reid

Best holiday you have been on - Croatia with the GALS. Argentina would be a close #2

Favourite place in the world - Cabin in Colorado

What sauce do you grab at Nando's, Garlic, Medium, Hot or Extra Hot - Lemon and herb baby

If you can have any topping on your pizza, what would it be? - Pepperoni

Earliest football memory - Playing rec soccer from 6 years old at the nearby park. My mom was my coach and we always got orange slices at halftime

Favourite football shirt ever - Hmmm US SOCCER '94 both home and away

Best sports stadium/venue you have play in or visited - Lambeau field!

Football stadium would you love to play in - I would like to play at Craven Cottage and beat Fulham with all of the pepper army

Your football hero/idol - Megan Rapinoe

Who is your biggest influence? - My dad!

Favourite sport, other than football - American football - GO PACK!!

Most treasured piece of football memorabilia - Laserwaffle medal :)

If you could go back in time, would you, and where would you go? - I would go back to East Dulwich roundabout on 20th May, 2024 to relive all of the joy

What makes you most angry? - When people scrap their teeth on silverware

Favourite word or phrase - I'll tell you my least favorite phrase here in England is how you guys describe orange juice 'with juicy bits' ???

Best piece of advice you have ever been given - Ted lasso quote - the happiest animal on the planet is a goldfish because they have a 10 second memory

Where did you grow up? - Milwaukee, Wisconsin

What year was Dulwich Hamlet Football Club formed? - 1893



DULWICH HAMLET F.C.
FOUNDED 1893

DEFECTED

octopus

TULSE FOREST

PECKHAM

HAMLET 2 NORWICH CITY 3

By David Rogers : Sunday 18th August 2024 : Attendance 814

A late goal by Norwich City's Ellie Smith sealed the fate for the Hamlet in front of a huge 814 strong crowd in the Champion Hill Summer sunshine.

Hamlet looked lively during the first 20 minutes and Norwich appeared to be a bit perturbed by the size of the crowd as Norwich City Manager Andy Cook confirmed in a post match interview.

The Hamlet took advantage of this and Lily Price had a 10th minute, 30 yard crack at the goal and hit the post.

Shortly afterwards Dulwich broke the deadlock after City keeper, Sarah Quadrill failed to clear the ball which was pounced on by Lucy Monkman who slotted it home.

City immediately hit back with a goal as a free-kick into the area found Shannon Shaw, who headed in from the goal mouth.

An hour into the game City took the lead

after a clumsy tackle on Ellie Smith saw them awarded a penalty which was coolly taken by Hope Strauss and went past Dulwich keeper, Saskia Reeves Priestly.

City managed to shake things up by introducing new signings Issy Moore and Lara Densley to the pitch and shortly afterwards they had added another goal after Smith pounced onto a dangerous ball in the area and put it past Reeves Priestley. 3-1.

Dulwich had not given up on their spirited performance and Asia Harbour-Brown scored in the 85th minute which resulted in a 3-2 finish as the final whistle blew.

The first game of the season and their first game in the Women's National League was a huge test for the Dulwich Women and they more than held their own on the day.

We are hoping the next time we see Norwich will be at Carrow Road!

Reeves-Priestly, Lodgie, Harbour-Brown, Searle (Hickman 84), Jowle (Read 70), Hutchings, Corrigan, Monkman, Stephens (Dunbar-Bonnie 70), Buchele, Price
Goalscorers: Monkman (26), Harbour-Brown (86) **Yellow Cards:** Hutchings (32)
Unused Substitutes: Gall, Hickman, Lacey



Join the Supporters' Trust



Picture: Duncan Palmer

Dulwich Hamlet Supporters' Trust is an independent, democratic, not for profit organisation working to support a successful and sustainable future for Dulwich Hamlet Football Club and to ensure strong supporter influence on that future.

DHST works closely with DHFC to support and promote the club, strengthen links with the community, co-ordinate volunteer support, and design and sell club merchandise. DHST holds a significant shareholding in DHFC on behalf of our members and the wider community.

Our vision is that Dulwich Hamlet will be a beacon of quality in non-league football – a viable and sustainable football club at the heart of its local community, protected for that community by its structure, ownership and values, and with a secure long-term home in East Dulwich whose facilities serve all local people.

Support these aims by joining DHST at the Mega-Container or online at www.dhst.org.uk/join

Email: info@dhst.org.uk



@dhstorg

Shop online at: www.dhfcshop.co.uk



SUPPORTERS' TRUST NEWS

The Hamlet booked their first league win of the season, away at London Seaward last weekend, and at the time of going to print, they're preparing to have at them again in a midweek League Cup fixture. It's a strong start to the season, and we want to continue in that direction. Give the team all your noisy love at today's game against Ashford Town! Depend upon The Pepper Army doing their customary yelling from the Toilets Opposite stand – new voices are always welcomed! You'll find songs and chants are in the online songbook: <https://dhst.org.uk/songbook/>.

We also want to say a big thank you to everyone who attended the closely fought season opener against Norwich City; a loss proudly borne after a cracking performance, and a great turnout to welcome the team to the National League.

Merch

Our first batch of 24-25 home shirts came in last Monday and they're already flying out of the MegaContainer at speed. Get along early to secure yours. We're short on some sizes, but if we don't have yours, we'll get more deliveries as the season progresses. The MegaContainer got a facelift recently, with fresh paint and new signage, and inside it's just as delightful, with plenty of tees, hats, scarves, pins and patches for your enjoyment. Community

We continue this season with our permanent foodbank for Albrighton Community Centre. We always welcome non-perishable goods, like cans and dry food, as well as essentials like feminine hygiene products, sealed toiletries and nappies, to help local people in need. We'll have some new community

initiatives in the works this season, too – watch this space.

100 Club

Our lotto helps the Trust raise funds to support the long-term future of Dulwich Hamlet while being in with a chance of winning a cash prize, with two winners every month. We've now raised nearly £65,000, and the prizes grow as more people take part. It's easy to join, and if you just want to dip your toe in first, you can buy one-off tickets for the next draw. Visit dhst.org.uk/100-club/.

Volunteering

Want to watch the game free and help the club? Try matchday volunteering! As a community club with limited resources, we need your help – from selling programmes and helping with matchday operations to working in the Mega Container. It's a great way to get to know other supporters and be part of the life of the Club, and volunteers get a merch discount. Email us at info@dhst.org.uk to get involved.

Join the Trust

If you're a fan of Dulwich Hamlet Women, join the Trust to have a say in the running and the future of the Club, as well as benefiting from local discounts around East Dulwich. Your voice matters, and your membership supports our work and ongoing aim to secure the club's long-term future in East Dulwich: join our Supporters' Trust community! Sign up at the Trust Shed, or online at www.dhst.org.uk. It's an annual £10 for adults, £5 concessions and £2 for under-18s.

CLUB RECORDS

FA AMATEUR CUP

Winners (4): 1919/20, 1931/32, 1933/34, 1936/37; **Semi Finalists (4):** 1908/09, 1921/22, 1928/29, 1934/35, 1955/56

FA TROPHY

Quarter Finalists (2), 1979/80, 2016/17

ISTHMIAN LEAGUE

Champions (4): 1919/20, 1925/26, 1932/33, 1948/49; **Runners up (8):** 1921/22, 1923/24, 1929/30, 1930/31, 1933/34, 1946/47, 1958/59, 2017/18; **Division 1 Champions:** 1977/78; **Division 1 South Champions:** 2012/13; **Premier Division Play-off Winners,** 2017/18; **Premier Division Play-off Finalists:** 2010/11, 2012/13

ISTHMIAN LEAGUE CUP

Finalists (2), 2010/11, 2012/13

ISTHMIAN CHARITY SHIELD

Winners, 2013/14

LONDON SENIOR CUP

Winners (5), 1924/25, 1938/39, 1949/40, 1983/84, 2003/04; **Finalists(5);** 1905/06, 1907/08, 1920/21, 1927/28, 2001/02

LONDON CHALLENGE CUP

Winners, 1998/99, **Finalists (2),** 1991/92, 1999/2000

OTHER TITLES

Norwood Charity Cup, 1889/1900; **Surrey Charity Shield,** 1902/03, 1905/06; **South London Charity Cup,** 1918/19; **Kings College Hospital Cup** 1924/25 (also joint winners 1921/22, 1923/24, 1926/27); **Bromley Hospital Cup** 1921/22, 1927/28, 1928/29, 1948/49); **Liege Tournament Cup,** 1928/29; **Guernsey Victory Cup,** 1932/33, 1948/49; **Connaught Hospital Cup,** 1932/33 (joint winners); **Oxford Hospital Cup,** 1935/36; **Wycombe Hospital Cup,** 1953/43; **Harris Cup,** 1954/55, 1955/56; **Mayes Memorial Cup,** 1959/60, 1960/61, 1964/65; **Kennedy Cup,** 1996/97, 1998/99, 2003/04, 2007/08; **Muir Memorial Cup**

SURREY SENIOR CUP

Winners (16 times - record), 1904/05, 1905/06, 1908/09, 1909/10, 1919/20, 1922/23, 1924/35, c1927/28, 1933/34, 1936/37, 1946/47, 1949/50, 1957/58, 1958/59, 1973/73, 1974/75; **Finalists** 1911/12, 1931/32, 1932/33, 1937/38, 1950/51, 1967/68

LONDON CHARITY CUP

Winners (9); 1919/20, 1920/21, 1922/23, 1925/26, 1927/28, 1928/29, 1947/48, 1956/57, 1957/58; **Joint Winners (3),** 1910/11, 1923/24, 1930/31

SURREY SENIOR SHIELD

Winners, 1972/73

SURREY CENTENARY SHIELD

Winners, 1977/78

SOUTH OF THAMES CUP

Winners (4), 1956/57, 1957/58, 1958/59, 1959/60

SOUTHERN COMBINATION CUP

Winners, 1973/74

SOUTHERN SUBURBAN LEAGUE

Champions (2), 1901/02, 1903/04

WOMEN'S SENIOR CUP

Finalists , 2021/22

LONDON AND SE WOMEN'S PREMIER LEAGUE

Champions, 2023/24

FROM THE AUTHOR JANE SLEIGHT



AVAILABLE IN KINDLE AND PAPERBACK FORMAT FROM [AMAZON.CO.UK](https://www.amazon.co.uk)



Jane is the author of the **Tales of a Modern Woman** novel series, **Sasha** – a novel exploring womanhood in the 21st century and three romantic intrigues - **Walking Back Toward Myself**, **Like Father, Like Son** & **The Secret of Contentment**. Her latest book, **Faking It**, is a romantic suspense novel.

Coming soon...Jane's latest novella is due for publication in Autumn 2023. **Son of the Furrows** is a romantic novella with a supernatural twist.

Find out more at [janesleight.com](https://www.janesleight.com)



WOMEN'S NATIONAL LEAGUE SE (DIVISION1)

#	TEAM	PLAYED	WON	DRAWN	LOST	GD	PTS
1	Real Bedford	2	2	0	0	4	6
2	Norwich City	2	2	0	0	3	6
3	Actonians	2	2	0	0	2	6
4	Chatham Town	2	1	0	1	3	3
5	Chesham United	2	1	0	1	1	3
6	Dulwich Hamlet	2	1	0	1	0	3
7	London Seaward	2	1	0	1	0	3
8	AFC Sudbury	2	1	0	1	-3	3
9	London Bees	2	0	1	1	-1	1
10	Queens Park Rangers	2	0	1	1	-1	1
11	Cambridge United	2	0	0	2	-3	0
12	Ashford Town	2	0	0	2	-5	0

DATE	OPPONENT	SCORE	SCORERS	GATE
18.08.24	Norwich City (H)	2-3	Monkman '69, Harbour-Brown '83	814
25.08.24	London Seaward (A)	0-1	Taylor 65'	120
29.08.24	London Seaward (A) (LC)			
01.09.24	Ashford Town (H)			
08.09.24	London Bees (A)			
15.09.24	Cheshunt United (H)			
22.09.24	Cambridge United (A)			

DATE	OPPONENT	KO
25.09.24	Chatham Town (A)	7:45PM
06.10.24	Actonian LFC (H)	
27.10.24	Queens Park Rangers (A)	
10.11.24	AFC Sudbury (H)	
17.11.24	Real Bedford (A)	
08.12.24	Norwich City (A)	
15.12.24	London Seaward (H)	
05.01.25	Ashford Town (A)	

DATE	OPPONENT	KO
12.01.25	London Bees (H)	
02.02.25	Actonians LFC (A)	
12.02.25	Chatham Town (H)	7:45PM
23.02.25	Cambridge United (H)	
09.03.25	Chesham United (A)	
23.03.25	Queens Park Rangers (H)	
13.04.25	AFC Sudbury (H)	
27.04.25	Real Bedford (H)	

DULWICH

HAMLET

FOOTBALL CLUB

MATCH DAY SPONSORSHIP PACKAGES



MATCH DAY

Four tickets, boardroom access, reserved seating, food and drink, a space in the programme and a pre-match announcement.

MEN'S AND WOMEN'S PLAYERS

Get a replica shirt signed by the player you sponsor, pre-match announcement and listing in programme.

MATCH BALL

Two tickets, young fans to lead team out, a match ball signed by the first team, programme and pre-match announcement.

Contact: **Clare Keeble** Commercial Manager, Dulwich Hamlet Football Club
07712 208921 / clarekeeble@dulwichhamletfc.co.uk

VIEWS FROM THE TOILETS OPPOSITE

HARRY ATTRIDGE

They say that if something is nice, you should do it twice. In this Hamlet context, that “twice” refers to two our forays in the last week to the eastern end of the noisy Central Line, to the tremendously-inland realm of London Seaward FC.

At the time of this column’s deadline, we have so far forayed to Seaward only the once (on Sunday). Our second visit is upcoming on Thursday night. Who does not enjoy musings on TFL Away Days, in multiple tenses?

Tense is probably an inaccurate way to describe Sunday’s first away venture of the season.

The Hamlet could in all honesty have made their own lives easier, ideally by converting more than one of the numerous close-in shooting opportunities that they teed-up for themselves across the ninety minutes.

As it was, the one goal was happily enough to get those all-important first league points chalked up on the board. Forza Dulwich. (Rest assured, dear reader; insightful, tactical analysis from this fan column of the on-pitch happenings will stop here, if ever they even started.

To paraphrase a reflection once uttered to me by the Rabble’s Cap’n Hamlet, “I spend a lot of time and money on a sport that I truthfully know little about how it actually

works”.)

More attuned to the proficiencies of the Pepper Army, we may perhaps have on our hands the start of a lovely little cross-London freundschaft with Seaward.

Time will tell. But it has been blessed with a good start. We very much appreciated Seaward’s hospitality toward us on Sunday, and we all look forward to seeing them, again on Thursday. Central to this was a top gesture from Seaward’s manager, George Murphy.

George was the gaffer at Crawley, when toward the sunset of last season, Pepper Army elements stayed behind after the Hamlet away victory, and cheered on George’s Crawley Reserves for their final ever game. For which George repaid us last Sunday, with money behind the clubhouse bar of his new club, to slake our thirsts. Top stuff.

Fear not, this column is far from transforming into “Hamlet Confidential”, an imaginary culinary and libationary exposé of the TFL Away Day scene.

That said, if you ever again find yourself up in Barkingside, if you want the best matchday snacks around, go get some spicy, spicy samosas from “Veena’s Virunthu” on the high street. Did I mention they are spicy?

**IN
OUR
HOUSE
WE
ARE
ALL
EQUAL**

DEFECTED

